

FAB  
ER  
LIC

**EXPERT  
KNOWS  
WHAT HAIR  
WANTS**



**IT'S SOMETHING NEW!**

**EXPERT SERIES  
HAS BECOME  
EVEN MORE EFFECTIVE**

Now, everybody can find a product that suits namely them!

Improved formula carefully cleanses scalp and strengthens roots, and active components fill hair with power and energy throughout the length.

Curls become more elastic and resilient after every application.



**MORE  
ECO-FRIENDLY!**

**DOES NOT CONTAIN**

**SLS**

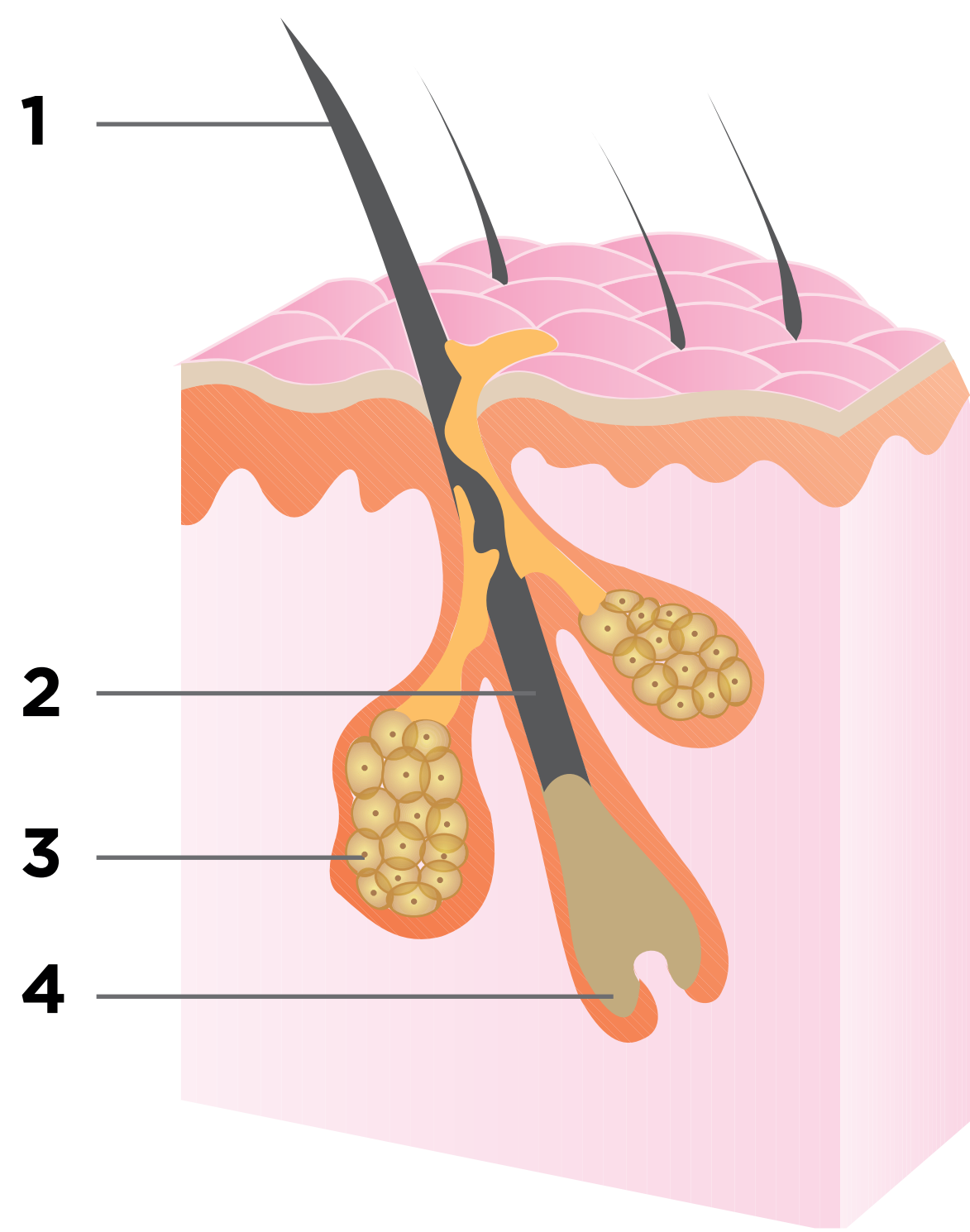
**DOES NOT CONTAIN  
PARABENS**

**PLASTIC  
BIODEGRADABLE TO**

**100%**

# IN THE TOTAL COMPOSITION

All products of the series contain **BIOTECHNOLOGICAL COMPLEX** that strengthens roots of your hair, charges it with power.



Contains extracts of natural origin that have effect on hair structure. The complex stimulates microcirculation of scalp, ensuring strengthening of bulbs (4), provides necessary nutrition to follicles (2) for growth, regulates sebaceous glands (3) and smoothes cuticle scales on damaged hair shafts (1):

- Stimulates hair growth
- Strengthens roots preventing and stopping hair loss
- Normalises sebum production
- Revitalises hair along entire length

Hair structure

The biotechnological complex includes some of the most effective time-tested components for the beauty and health of hair:



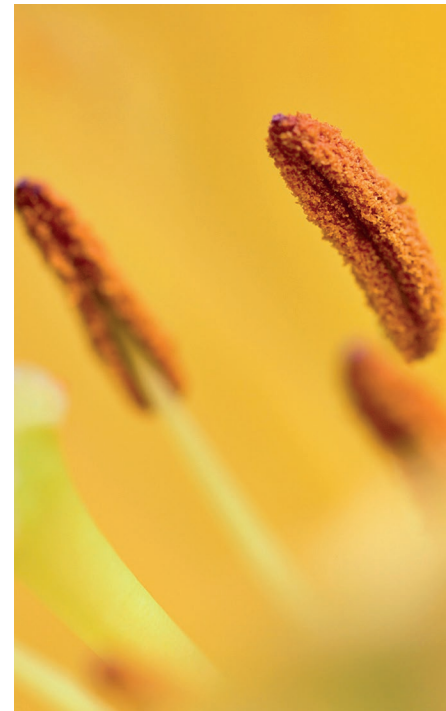
**ARTEMIA SALINA PLANKTON EXTRACT**

provides hair cells with energy, accelerates local metabolism, increases collagen synthesis and protects from free radicals.



**BRAZILIAN GINSENG (PFAFIA)**

fights hair loss and strengthens it. Gives strands strength, saturating them with B vitamins and amino acids.



**FLOWER POLLEN**

is a storehouse of useful vitamins and amino acids. Seals hair shaft, giving density to hair, and also prevents brittleness and split ends.



**EGG YOLK**

moisturises and strengthens hair, improves nourishment of hair bulbs, returns shining and silkiness.



**ARNICA FLOWER EXTRACT**

intensively nourishes, improves blood circulation, promotes hair strengthening, prevents hair loss and dandruff formation.



**GERM WHEAT EXTRACT**

it's rich in proteins and vitamin E. It deeply nourishes hair, gets rid of brittleness and frayed ends. Thanks to high penetrating ability, it deeply moisturises hair, gives it natural shining.



**NETTLE EXTRACT**

contains a whole complex of vitamins and trace elements, and also chlorophylls. It improves root blood circulation strengthening it and stimulating hair growth. It decreases activity of sebaceous glands helping to keep scalp freshness for a long time.

# EXPERT FOR DEEP RECOVERY

**Ever Strong technology** is especially suitable for damaged and weakened hair. Products based on it reconstruct hair material, close damaged scales. They boost up streak elasticity and give them healthy shining.

**AMLA OIL** contains a record amount of vitamin C, which prolongs life of long hair and stimulates growth of new ones. Intensively restores new hair with no weight effect.



**Shampoo**  
250 ml  
**1880**

**Mask**  
160 ml  
**1882**

**Elixir**  
30 ml  
**1897**

**Balm**  
170 ml  
**1881**

# EXPERT FOR 3D VOLUME

**3D Volume** – saving thin hairs. It is based on the system of formation of the thinnest film around every hair, due to which the elasticity and density of every hair increases, and additional volume appears. At the same time, it prevents excessive evaporation of moisture. Therefore, the hair remains light and becomes more silky.

**WHEAT PROTEINS** give hair shining and elasticity, prevent brittleness and thicken their structure, smooth surface of hair and reduce its electrification.



**Shampoo**  
250 ml  
**1886**

**Balm**  
170 ml  
**1887**

# EXPERT FOR COLOR PROTECTION

**The Total Color series** is what you need to maintain the quality of dyed hair. The technology is designed to close cuticle of hair shaft, sealing the pigment inside. It provides color protection from fading and washing out. Gives your hair healthy shining.

**CYSTEINE** is an amino acid that creates a light water-repellent film on the surface of hair that prevents color pigment from washing out.



**Shampoo**  
250 ml  
**1892**

**Balm**  
170 ml  
**1893**

# EXPERT FOR INTENSIVE STRENGTHENING

**The Extra Force series** is suitable for all hair types, especially recommended for damaged and weakened hair. The products intensively strengthen strands along the entire length, restore vitality to weakened hair and saturate them with nutrients.

**CERAMIDES** in the composition strengthen structure of cuticle and hair fiber, prevent brittleness and appearance of split ends, maintain elasticity of strands.

**Shampoo**  
250 ml  
**1898**

**Balm**  
170 ml  
**1899**





# 「EXPERT FOR CRYSTAL PURIFICATION」

**BLACK DETOX Shampoo** is recommended for all hair types especially for one prone to getting greasy. Suitable for those who often use styling products. Coal particles absorb various contaminants from pores of scalp and from surface of hair. Due to this, shampoo removes excess sebum, sweat and leftover hair styling products, as well as chlorine after a visit to the pool.

**ACTIVATED CHARCOAL** is a highly effective natural sorbent that promotes thorough detoxification of hair and scalp. It normalizes activity of sebaceous glands, prolonging feeling of freshness and cleanliness.

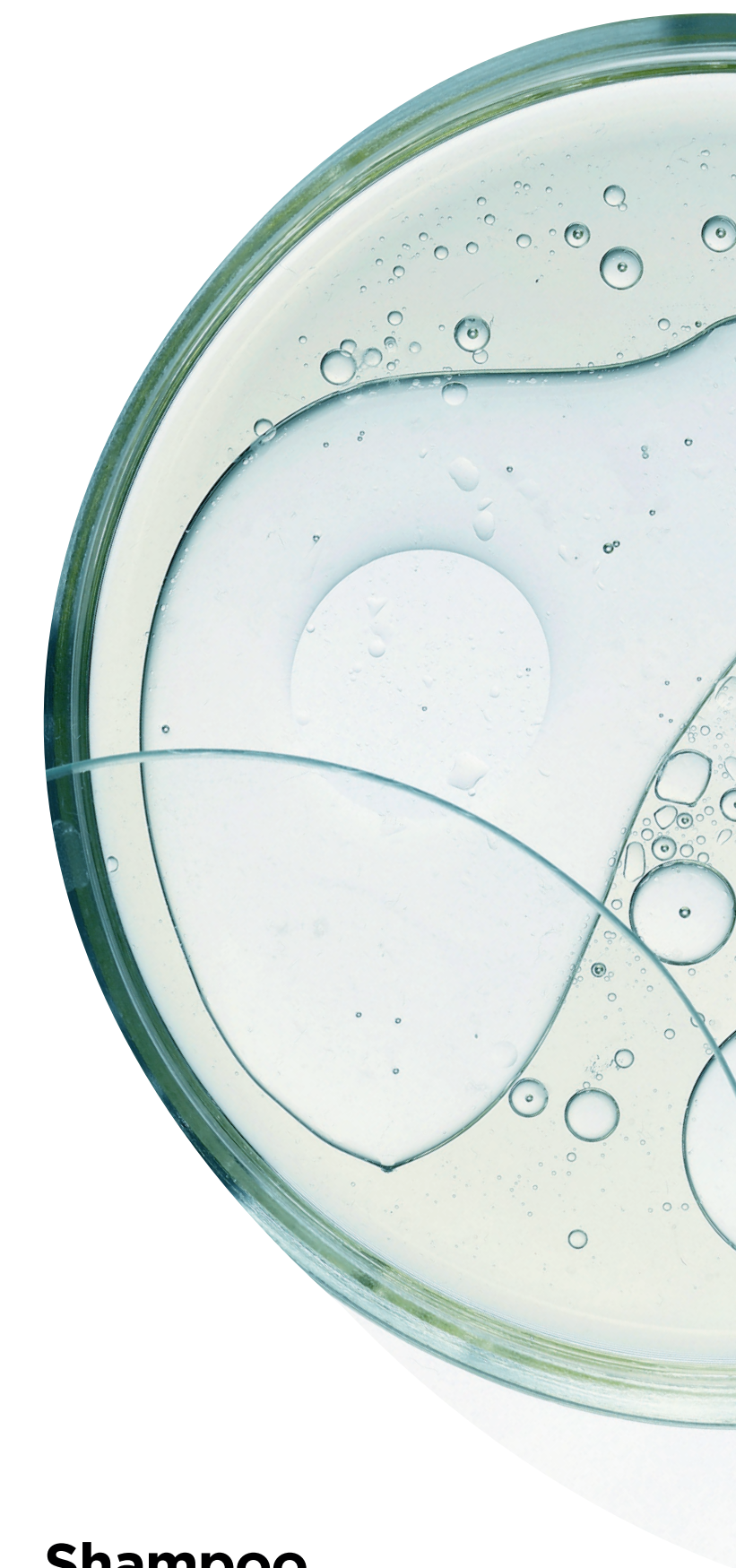


**Crystal  
Purification  
Shampoo**  
250 ml  
**1884**

# EXPERT FOR QUICK CARE

**Shampoo-conditioner 2 in 1** is suitable for all types of hair, especially recommended for frizzy and electrifying. A universal product that performs functions of shampoo and balm at the same time. It gently cleanses scalp and nourishes hair along the entire length. Ideal option for those who want to get multifunctional care under time constraints.

**SHEA BUTTER** repairs damaged cuticles and protects hair from moisture loss.



**Shampoo  
and Conditioner**  
250 ml  
**1895**

# EXPERT FOR DANDRUFF ELIMINATION

**The Advanced Care series** is ideal for all hair types prone to dandruff. Suitable for men, women and teenagers from 14 years old. The products are developed specially for prevention of dandruff and active fight against it. Efficiency is clinically proven: eliminate dandruff from the first application\*. They soothe irritated scalp and relieve itching, restore healthy balance of scalp.

**PYRTHIONE ZINC** eliminates dandruff, normalizes function of sebaceous glands and balances scalp microflora.

*\*SPC for expert assessment of quality and safety of food and cosmetics CosmoProdTest.*



**Anti  
Dandruff  
Shampoo**  
400 ml  
**2767**

**Anti  
Dandruff  
Shampoo  
and Balm 2 in 1**  
400 ml  
**2768**

**「 EVEN MORE OF  
YOUR FAVOURITE  
PRODUCT! 」**

**XL 400 ML**  
MEGA FORMAT

**Shampoo and  
Conditioner 2 in 1**  
400 ml  
**1896**



**Intensive  
Strengthening  
Shampoo**  
400 ml  
**1894**



**3D Volume  
Shampoo**  
400 ml  
**1888**

**Deep  
Restoration  
Shampoo**  
400 ml  
**1883**





# LEARN WHAT YOU NEED

SERIES	HAIR TYPE	IT'S FOR ME, IF MY HAIR	RESULT
<b>Ever Strong</b> 	for damaged and weakened hair	<ul style="list-style-type: none"> <li>• Brittle</li> <li>• Dim</li> <li>• Frayed ends</li> <li>• Do not hold styling</li> </ul>	Restores hair matter and nourishes hair throughout the length. Returns strands healthy look, shine and softness, increases their elasticity.
<b>3D Volume</b> 	for thin hair	<ul style="list-style-type: none"> <li>• Lack of volume</li> <li>• Seem sparse</li> <li>• Thin</li> </ul>	Gives hair volume and moisturises hair throughout the length.

SERIES	HAIR TYPE	IT'S FOR ME, IF MY HAIR	RESULT
<b>Total Color</b> 	For Colored Hair	<ul style="list-style-type: none"> <li>• Colored, toned after bleaching</li> </ul>	Protects color pigment from washing out. Emphasizes brightness, depth and color saturation.
<b>Extra Force</b> 	for damaged, brittle and weakened hair	<ul style="list-style-type: none"> <li>• Damaged by constant styling and dyeing</li> <li>• Look lifeless</li> <li>• Prone to brittleness and appearance of frayed ends</li> <li>• Thin</li> </ul>	Strengthens hair structure, makes it softer and elastic. Returns vitality and healthy shining to hair.

# LEARN WHAT YOU NEED

SERIES	HAIR TYPE	IT'S FOR ME, IF MY HAIR	RESULT
<b>Black Detox</b> 	for hair prone to greasiness  for hair after frequent use of styling products  for hair after visiting the pool and fitness	<ul style="list-style-type: none"> <li>• Look dirty by the end of day</li> <li>• Lack of volume at roots</li> <li>• Dim</li> <li>• Lose shape quickly and require a lot of styling products</li> </ul>	Normalizes activity of sebaceous glands, prolonging feeling of freshness and cleanliness of hair. Removes styling product residue.
<b>2 IN 1</b> 	for frizzy and electrified hair	<ul style="list-style-type: none"> <li>• Need keeping natural shining and nourishment</li> <li>• Require more conditioning</li> </ul>	Restores damaged cuticle and protects hair from moisture loss

SERIES	HAIR TYPE	IT'S FOR ME, IF MY HAIR	RESULT
<b>Advanced Care</b> 	for all hair types prone to dandruff	<ul style="list-style-type: none"> <li>• Prone to dandruff</li> <li>• Scalp is dry and irritated</li> </ul>	They eliminate dandruff from the first application and prevent its further appearance. Moisturise and calm down scalp, relieve itching.

FAB  
ER  
LIC

**YOUR PERSONAL  
EXPERT**

