

- Maximum concentration: one small drop is enough for the entire face
- Maximum density
- Perfect non-stop coverage
- Creates a velvety matte finish
- Vitamin E is a powerful antioxidant that protects skin from harmful effects
- Grape seed extract has an anti-inflammatory effect

MAKEUP ARTIST TIPS
ON CREATING THE PERFECT TONE

1 SKIN PREPARATION

Use primer: mattifying – to eliminate oily shine, narrowing pores – to smooth out microrelief, radiant – to give your face freshness and get rid of signs of fatigue. And to make your skin smoother and hide flaking, choose a moisturizing primer.

2 TONE EVENING

Don't apply too much product. One drop is enough!

Choose your own method:

- **With pads of your fingers.** Distribute the product with light patting movements from the center to the periphery.
- **By brush.** Apply the product in a circular motion with a fluffy brush, and linearly with a flat brush from the center of face to its edges.
- **By sponge.** Wet the sponge with water and apply the product with light tapping movements for the thinnest coverage and the effect of perfectly smooth skin.

FABERLIC

GLAM
TEAM
soft

BEFORE → AFTER →



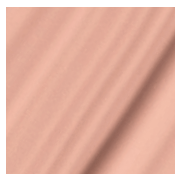
ULTRA COVER FOUNDATION

CONCEALER WITH
ULTRA-CONCENTRATED FORMULA
AND MAXIMUM COVERAGE DENSITY

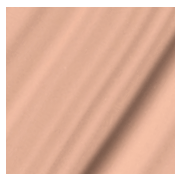
ECONOMICAL
CONSUMPTION -
COMPACT
FORMAT



BEFORE APPLICATION

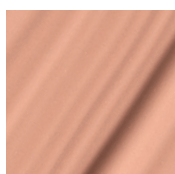
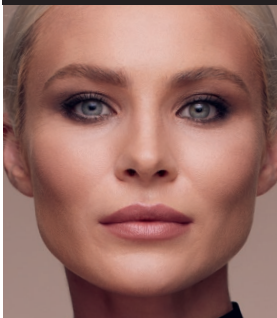


6745
porcelain

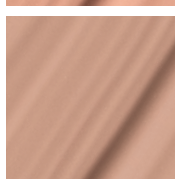


6746
ivory

AFTER APPLICATION



6747
natural
beige



6748
sandy

100%

RESULT

GLAM
TEAM
make up

An ultra-pigmented foundation with a high coverage density instantly evens out skin's texture, literally "erasing" enlarged pores, wrinkles, scars and other visible imperfections, and controls appearance of oily shine.

The plastic creamy texture glides gently over skin, spreads evenly and quickly, leaving a flawless matte finish.

Formula with extracts of grape seeds and vitamin E does not tighten or dry out skin, and has an anti-inflammatory effect.



**NO
VASCULAR
NETTING!**

**NO
REDNESS!**

**NO
PIGMENTATION!**