

FABERLIC

I TRUST  
EXPERT



# FABERLIC

# EXPERT

EXPERT PERMANENT HAIR  
CREAM DYE EVEN RICHER  
COLOR AND PALETTE  
OF THE MOST POPULAR  
SHADES

**100%**  
GRAY HAIR  
COLORING

UP TO **10** WEEKS  
OF PERMANENT  
COLOR

**2** TIMES  
MORE CARE





FABERLIC

EXPERT

# INNOVATIONS FOR YOUR HAIR BEAUTY

## **INTENSIVE PIGMENTS**

reliably cover gray hair.

## **CARING COMPONENTS**

preserve hair quality  
and protect color from fading.

## **SOFT, CREAMY AND PLASTIC TEXTURE**

is easily distributed.





## IMPROVED FORMULA

### **COLOR BOOSTER**

helps the dye penetrate deeper into the hair shaft and not wash out for as long as possible, maintaining richness of the shade.

**BIOTIN** — vitamin B7, essential for your hair health and beauty. Strengthens hair shaft, making strands stronger and gives them a multifaceted shine.

**AMLA OIL** nourishes and restores hair along the entire length, slows down appearance of gray hair.

**DELICATE FLORAL FRAGRANCE** - even more fun from coloring.





FABERLIC

EXPERT

# UPDATED PALETTE

The most popular shades are complemented by trendy tones that match all the latest trends.

**EXPERT  
PERMANENT  
CREAM DYE  
SHADES PALETTE**

26 shades  
ART. 3399

FABERLIC

EXPERT



СТОЙКАЯ  
КРЕМ-КРАСКА  
ДЛЯ ВОЛОС

PERMANENT HAIR  
CREAM COLOR





## INCLUDED:

1. BOTTLE WITH DEVELOPING MILK, 50/75 ml (depending on shade)
2. TUBA WITH CREAM DYE, 50 ml
3. CARING BALM AFTER COLORING, 15 ml
4. GLOVES
5. INSTRUCTION





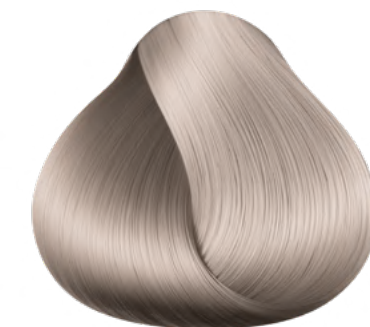
**SHADE 9.86**  
Very light  
blonde  
strawberry



**11.1**  
**Ultra brightening blonde ash**  
**3357**



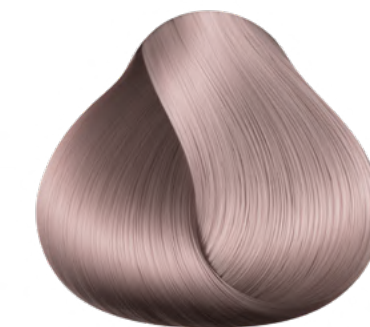
**10.17**  
**Very light ash blonde violet**  
**3356**



**9.1**  
**Very light blonde platinum**  
**3354**



**9.11**  
**Very light blonde ash**  
**3390**



**9.16**  
**Very light ash blonde pink**  
**3355**



**9.86**  
**Very light blonde strawberry**  
**3391**



**8.01**  
**Light blonde natural**  
**3299**



**8.1**  
**Light blonde ash**  
**3352**



**8.17**  
**Light blonde ash violet**  
**3353**

Pink pigment neutralizes yellowness of hair, refreshes your look and helps to achieve the actual strawberry blonde



**SHADE 6.4**  
Chestnut  
copper



**5.87**  
**Chocolate**  
3292

The noble shade suits any color type, as it combines warm and cold nuances



**6.0**  
**Dark blonde**  
3293



**6.4**  
**Copper chestnut**  
3294



**7.0**  
**Blonde**  
3295



**7.1**  
**Ash blonde**  
3296



**7.17**  
**Blonde ash violet**  
3297



**7.34**  
**Blonde colden copper**  
3298



FABERLIC

**SHADE 3.0**  
Dark chestnut



**EXPERT**



**5.0**  
Light chestnut  
3289



**5.35**  
Light chestnut  
Chocolate  
3290



**5.66**  
Ruby  
3291

A bold decision for those who like to stand out and are not afraid to experiment!



**4.0**  
Chestnut  
3285



**4.05**  
Chestnut  
Chocolate  
3287



**4.1**  
Chestnut ash  
3286



**4.5**  
Chestnut  
Mahogany  
3288



**3.0**  
Dark Chestnut  
3283



**3.05**  
Dark Chestnut  
Chocolate  
3284



**1.0**  
Black  
3282



## EXPERT PERMANENT HAIR CREAM DYE



## SHADE TABLE

The coloring result depends on the original hair color

- recommended
- possible for using
- not recommended

article	gray	blonde	светлый блондин	light blonde	light brown	brown	brown-haired	dark brown	black
1.0	Black	3282							
3.0	Dark chestnut	3283							
3.05	Dark chestnut chocolate	3284							
4.0	Chestnut	3285							
4.1	Ash Chestnut	3286							
4.5	Chocolate Chestnut	3287							
4.05	Chestnut Mahogany	3288							
5.0	Light chestnut	3289							
5.35	Light Chestnut Chocolate	3290							
5.87	Chocolate	3291							
5.66	Ruby	3292							
6.0	Dark blonde	3293							
6.4	Copper chestnut	3294							
7.0	Blonde	3295							
7.1	Ash blonde	3296							
7.17	Ash Violet blonde	3297							
7.34	Golden copper blonde	3288							
8.01	Natural light blonde	3299							
8.1	Light Ash Blonde	3352							
8.17	Light Ash Violet Blonde	3353							
9.1	Very Light Platinum Blonde	3354							
9.16	Very Light Ash Pik Blonde	3355							
9.11	Very light blonde ash	3390							
9.86	Very light blonde strawberry	3391							
10.17	Very light ash violet blonde	3356							
11.1	Ultra Lightening ash blonde	3357							



## ACCESSORIES

### HAIR COLORING CAPE

ART. 11168

Length from neck  
to bottom edge -  
about 40 cm.

Diameter: 95 cm.

Material: Polyester.

### SET FOR COLORING (BOWL AND BRUSH)

ART. 9007





FABERLIC

EXPERT



LOOK AT THE COLOR  
ANEW