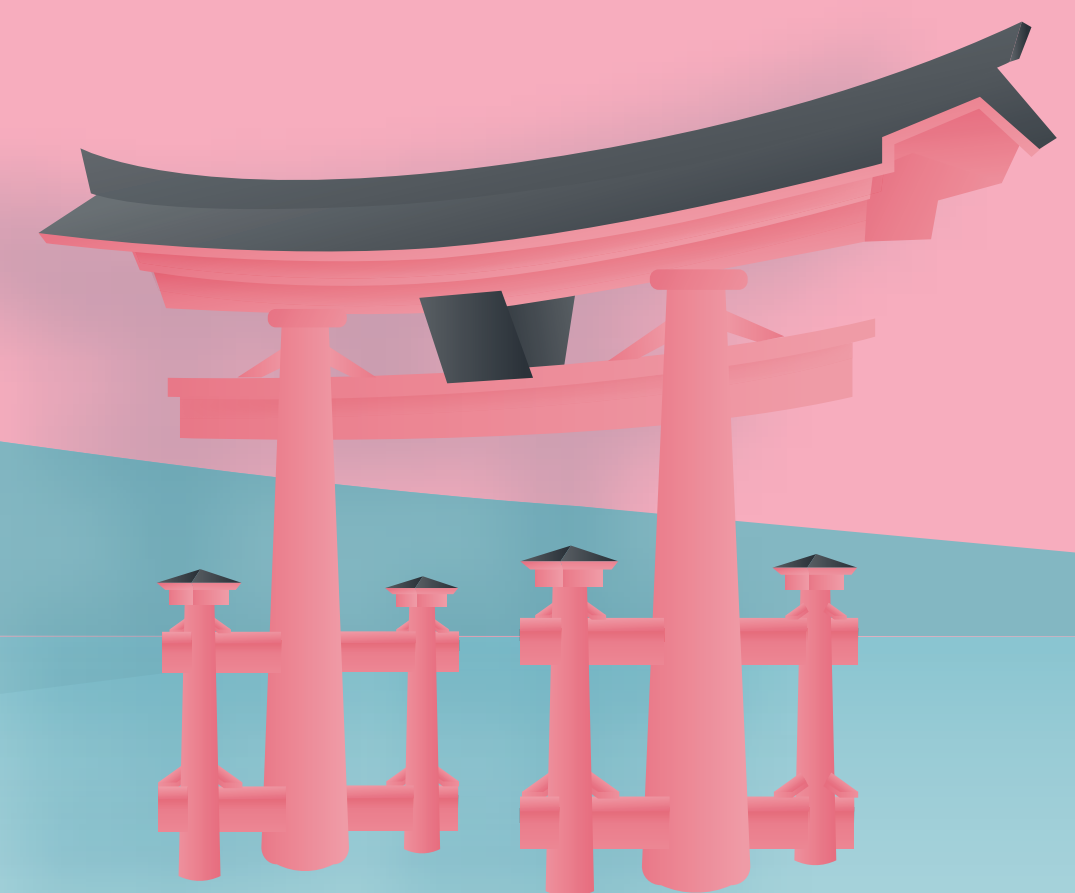
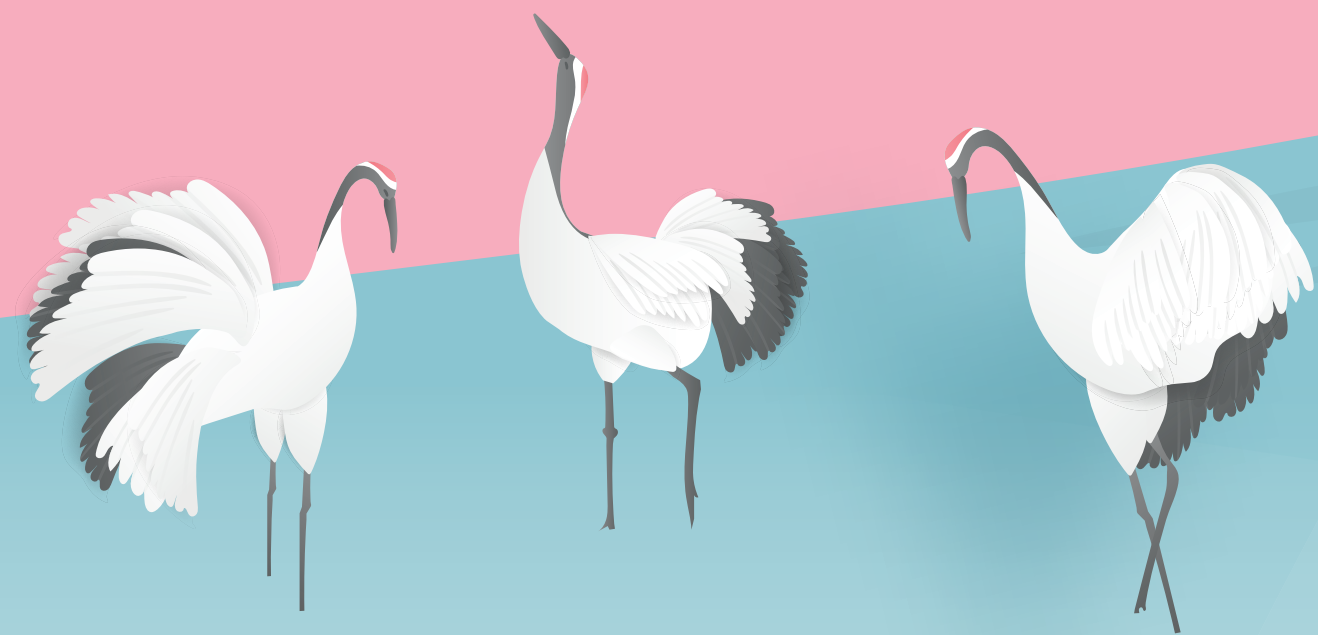


Hamigaki

CLEANING TEETH AS AN ART



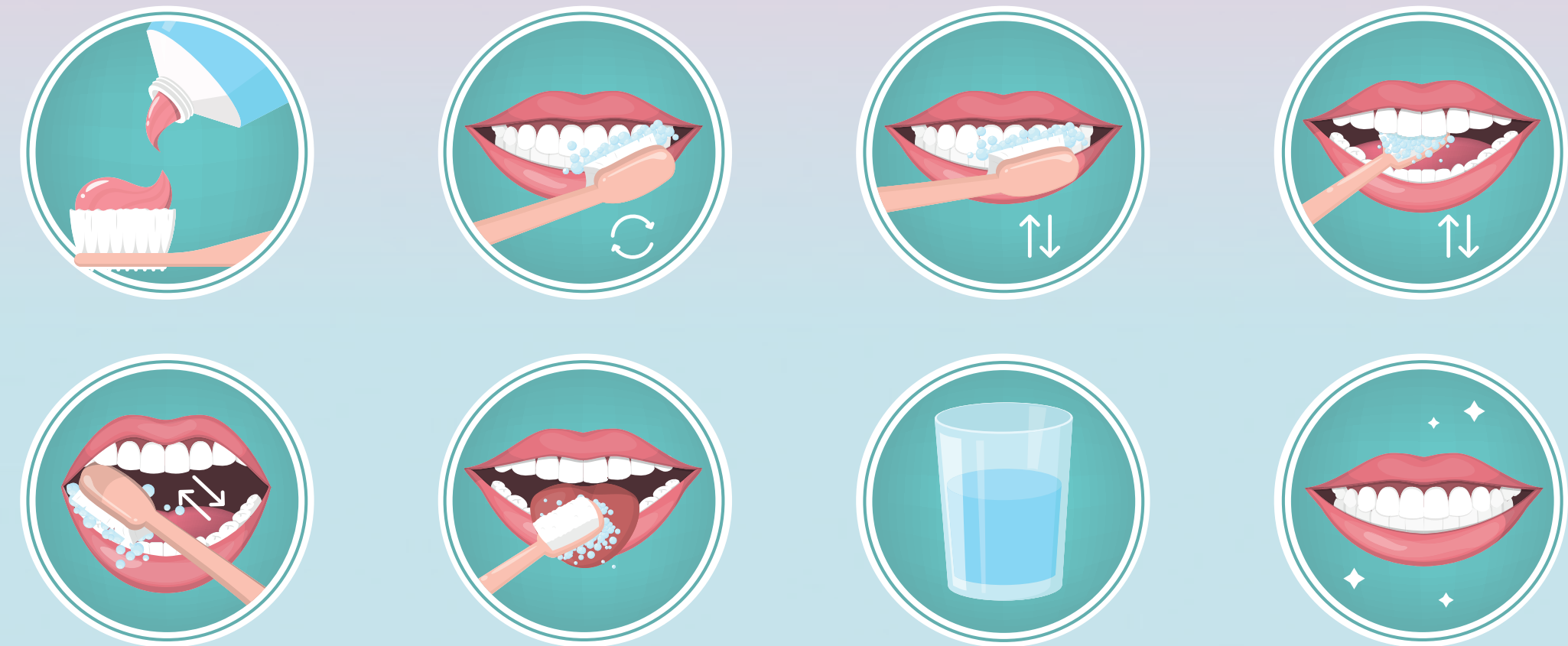
FABERLIC



Hamigaki is a Japanese system that helps maintain healthy teeth throughout your life. It is part of the cultural code of the land of the rising sun. In daycare and school, children and adults brush their teeth after every meal, this forms a lifelong habit. The Japanese always have a brush and toothpaste with them.

This approach to oral care was the inspiration for the creation of series of Hamigaki toothpastes, developed on the basis of traditional Japanese ingredients proven by many generations.

CLEAN YOUR TEETH RIGHT!



FABERLIC

ALL FORMULAS ARE BASED ON TRADITIONAL JAPANESE INGREDIENTS:

- **Mukurossi** extract has a powerful antibacterial effect. For many centuries, Mukurossi seeds, which give a lush, voluminous foam, have been used to gently cleanse the surface of pearls. Today, the extract of this plant is actively used in the formulas of toothpastes: all thanks to its powerful antimicrobial effect. Japanese scientists have proven that mukurossi extract effectively resists fungal infections that cause diseases of oral mucosa and periodontal disease.
- **A complex of enzymes** removes plaque and prevents its formation.
- **Balanced abrasive system** effectively cleans enamel without damaging or injuring it.



FABERLIC

2673 TOOTHPASTE 75 ml

Protection from caries

Reliably protects teeth from caries, thoroughly cleaning enamel.

Sodium monofluorophosphate serves as a source of fluoride ions necessary for prevention of caries and promotes enamel remineralisation.

Himalayan pink salt contains mineral compounds and trace elements that are beneficial for teeth and gums.

IT'S INTERESTING!

Himalayan salt has a unique composition: it contains more than 80 minerals and trace elements, among which even ions of gold, platinum and several rare metals were found! To keep it, quality pink salt is still mined only by hand, without use of explosives.



Pink salt

FABERLIC

2676 TOOTHPASTE 75 ml

Gum health

Improves state of gums and maintains their health.

Allantoin soothes and strengthens gums, has anti-inflammatory, wound healing and regenerating effects.

Vanillyl butyl ether has a slight warming effect, improves blood microcirculation in your gums.

Ginseng extract has a tonic effect and strengthens your gums.



IT'S INTERESTING!

The name "ginseng" itself is often translated as "root of life." However, literal translation from Chinese sounds a little different: "root man." It's all about the similarity of shape of ginseng root to a human being. Moreover, it even affects the price of plant: the more the root resembles a human figure, the more expensive it is!



Ginseng

FABERLIC

2675 TOOTHPASTE 75 ml

Whitening and Moisturising

Gently whitens surface of your teeth and gently cares for gums, moisturising them.

Sodium pyrophosphate helps to lighten enamel, prevents formation of tartar.

Matcha green tea extract has pronounced antioxidant properties, has a beneficial effect on gums.



IT'S INTERESTING!

Matcha tea is famous for its exceptional amount of antioxidants: it contains 137 times more than regular green tea! In addition, it contains a large amount of caffeine, and most importantly - an amino acid. L-theanine. It can improve your mood and have a calming effect without causing drowsiness. Together, these components give a stunning effect of cheerfulness, but without feeling of anxiety that often comes from coffee.



FABERLIC

2672 TOOTHPASTE 75 ml

Comprehensive Care

Comprehensively cares for oral cavity, maintaining health of teeth and gums.

Calcium lactate is a valuable source of calcium needed to restore and strengthen tooth enamel.

The polymer Polydon A, which is contained in formulas of both toothpastes, forms a protective film on surface of your teeth, thereby preventing formation of plaque.

Sakura extract has an antioxidant, softening effect; has a beneficial effect on gums.



ITS' INTERESTING!

If you want to admire the largest number of flowering sakura trees in one place, you will have to go not to Japan, as one might assume, but ... to America! It is here, in the state of Georgia, that the city with the maximum concentration of sakura is located - about 350 thousand trees.



Sakura

FABERLIC

**JAPANESE
TRADITIONS**
FOR HEALTH OF
TEETH AND GUMS

